

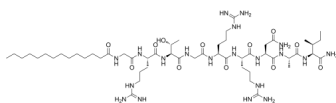
PKI 14-22 amide,myristoylated

Cat. No.: HY-P1291
Batch No.: 146035
CAS No.: 201422-03-9
Molecular Formula: C₅₃H₁₀₀N₂₀O₁₂

ANALYTICAL DATA

Theoretical: C(-), H(-), N(-), Peptide Content(≥60.0%)
Result: C(47.82%), H(7.66%), N(19.16%), Peptide Content(82.70%)

Chemical Structure:



Caution: Product has not been fully validated for medical applications. For research use only.

Tel: 609-228-6898

Fax: 609-228-5909

E-mail: tech@MedChemExpress.com

Address: 1 Deer Park Dr, Suite Q, Monmouth Junction, NJ 08852, USA