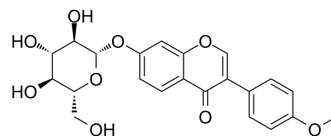


Ononin

Cat. No.:	HY-N0270		
CAS No.:	486-62-4		
Molecular Formula:	C ₂₂ H ₂₂ O ₉		
Molecular Weight:	430.4		
Target:	Others		
Pathway:	Others		
Storage:	Powder	-20°C	3 years
		4°C	2 years
	In solvent	-80°C	2 years
		-20°C	1 year



SOLVENT & SOLUBILITY

In Vitro

DMSO : 100 mg/mL (232.34 mM; Need ultrasonic)

Concentration	Mass		
	1 mg	5 mg	10 mg
1 mM	2.3234 mL	11.6171 mL	23.2342 mL
5 mM	0.4647 mL	2.3234 mL	4.6468 mL
10 mM	0.2323 mL	1.1617 mL	2.3234 mL

Please refer to the solubility information to select the appropriate solvent.

In Vivo

- Add each solvent one by one: 10% DMSO >> 40% PEG300 >> 5% Tween-80 >> 45% saline
Solubility: ≥ 2.08 mg/mL (4.83 mM); Clear solution
- Add each solvent one by one: 10% DMSO >> 90% (20% SBE-β-CD in saline)
Solubility: ≥ 2.08 mg/mL (4.83 mM); Clear solution
- Add each solvent one by one: 10% DMSO >> 90% corn oil
Solubility: ≥ 2.08 mg/mL (4.83 mM); Clear solution

BIOLOGICAL ACTIVITY

Description

Ononin is an isoflavone that inhibits the growth of *Pluchea lanceolata* in soil.

CUSTOMER VALIDATION

- Acta Pharm Sin B. 2021 Jan;11(1):143-155.

-
- BMC Complement Med Ther. 2022 Jan 27;22(1):25.
 - Toxicol Appl Pharmacol. 2022 Jul 29;116:179.
 - Exp Ther Med. September 16, 2021.
 - Research Square Preprint. 2021 Aug.

See more customer validations on www.MedChemExpress.com

Caution: Product has not been fully validated for medical applications. For research use only.

Tel: 609-228-6898

Fax: 609-228-5909

E-mail: tech@MedChemExpress.com

Address: 1 Deer Park Dr, Suite Q, Monmouth Junction, NJ 08852, USA