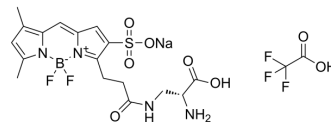


sBADA TFA

Cat. No.:	HY-D1690
Molecular Formula:	C ₁₉ H ₂₁ BF ₅ N ₄ NaO ₈ S
Molecular Weight:	594.25
Target:	Fluorescent Dye
Pathway:	Others
Storage:	Please store the product under the recommended conditions in the Certificate of Analysis.



BIOLOGICAL ACTIVITY

Description	sBADA TFA is a potent green fluorescent dye. sBADA TFA is a sulfonated BODIPY-FL 3-amino-D-alanine. sBADA TFA is used to label peptidoglycans in bacterial cell walls in situ. ($\lambda_{ex}=490$ nm, $\lambda_{em}=510$ nm) ^[1] .
In Vitro	<p>Guidelines (Following is our recommended protocol. This protocol only provides a guideline, and should be modified according to your specific needs).</p> <p>sBADA TFA assay^[1] (to quantify GAPDH):</p> <ol style="list-style-type: none"> 1. Wash <i>S. venezuelae</i> cells twice with pre-warms fresh LB broth (30°C) and collect via centrifuge (7000 g, 2 minutes). 2. <i>S. venezuelae</i> cells are re-suspended in fresh LB broth (30°C) containing 1mM sBADA TFA and cultured for 5 minutes. 3. <i>S. venezuelae</i> cells are treated with 70% ice-cold ethanol and incubates on ice-bath for 1 hour. 4. The fixed cells are then washed twice with 4°C 1x PBS via centrifuge and re-suspends in 4°C 1x PBS before imaging. <p>MCE has not independently confirmed the accuracy of these methods. They are for reference only.</p>

REFERENCES

[1]. Hsu YP, et, al. Full color palette of fluorescent d-amino acids for in situ labeling of bacterial cell walls. Chem Sci. 2017 Sep 1;8(9):6313-6321.

Caution: Product has not been fully validated for medical applications. For research use only.

Tel: 609-228-6898

Fax: 609-228-5909

E-mail: tech@MedChemExpress.com

Address: 1 Deer Park Dr, Suite Q, Monmouth Junction, NJ 08852, USA