

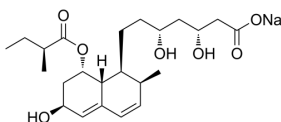
Pravastatin (sodium)

| | |
|----------------|---|
| Cat. No.: | HY-B0165A |
| CAS No.: | 81131-70-6 |
| Batch No.: | 29645 |
| Chemical Name: | 1-Naphthaleneheptanoic acid, 1,2,6,7,8,8a-hexahydro- β , δ ,6-trihydroxy-2-methyl-8-[(2S)-2-methyl-1-oxobutoxy]-, sodium salt (1:1), (β R, δ R,1S,2S,6S,8S,8aR)- |

PHYSICAL AND CHEMICAL PROPERTIES

| | |
|--------------------|--|
| Molecular Formula: | C ₂₃ H ₃₅ NaO ₇ |
| Molecular Weight: | 446.51 |
| Storage: | 4°C, sealed storage, away from moisture and light * In solvent : -80°C, 6 months; -20°C, 1 month (sealed storage, away from moisture and light) |

Chemical Structure:



ANALYTICAL DATA

| | |
|----------------|---|
| Appearance: | Off-white to Pale purple (Solid) |
| LCMS: | Consistent with structure |
| Purity (LCMS): | 98.96% |
| Conclusion: | The product has been tested and complies with the given specifications. |

Caution: Product has not been fully validated for medical applications. For research use only.

Tel: 609-228-6898

Fax: 609-228-5909

E-mail: tech@MedChemExpress.com

Address: 1 Deer Park Dr, Suite Q, Monmouth Junction, NJ 08852, USA