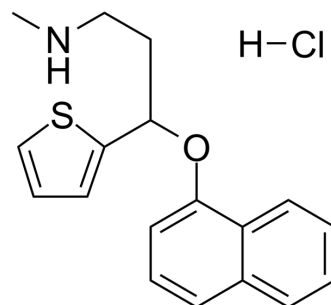


(±)-Duloxetine hydrochloride

Cat. No.:	HY-B0161E
CAS No.:	947316-47-4
Molecular Formula:	C ₁₈ H ₂₀ ClNOS
Molecular Weight:	333.88
Target:	Serotonin Transporter
Pathway:	Neuronal Signaling
Storage:	Please store the product under the recommended conditions in the Certificate of Analysis.



BIOLOGICAL ACTIVITY

Description

(±)-Duloxetine ((Rac)-Duloxetine) hydrochloride is the racemate of Duloxetine hydrochloride. Duloxetine hydrochloride, a serotonin-norepinephrine reuptake inhibitor, can be used for diabetic neuropathic pain and fibromyalgia as well as major depressive disorder research^[1].

REFERENCES

[1]. Mermi O, et al. [Duloxetine-Induced Hypertension: A Case Report]. Turk Psikiyatri Derg. 2016;27(1):67-69.

Caution: Product has not been fully validated for medical applications. For research use only.

Tel: 609-228-6898

Fax: 609-228-5909

E-mail: tech@MedChemExpress.com

Address: 1 Deer Park Dr, Suite Q, Monmouth Junction, NJ 08852, USA