

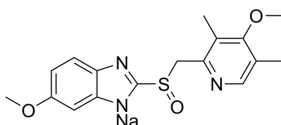
Omeprazole (sodium)

| | |
|----------------|---|
| Cat. No.: | HY-B0113A |
| CAS No.: | 95510-70-6 |
| Batch No.: | 243251 |
| Chemical Name: | 1H-Benzimidazole, 6-methoxy-2-[[[(4-methoxy-3,5-dimethyl-2-pyridinyl)methyl]sulfinyl]-, sodium salt (1:1) |

PHYSICAL AND CHEMICAL PROPERTIES

| | |
|--------------------|--|
| Molecular Formula: | C ₁₇ H ₁₈ N ₃ NaO ₃ S |
| Molecular Weight: | 367.40 |
| Storage: | 4°C, sealed storage, away from moisture * In solvent : -80°C, 6 months; -20°C, 1 month (sealed storage, away from moisture) |

Chemical Structure:



ANALYTICAL DATA

| | |
|------------------------------|---|
| Appearance: | White to off-white (Solid) |
| ¹ H NMR Spectrum: | Consistent with structure |
| LCMS: | Consistent with structure |
| Purity (LCMS): | 99.98% |
| Conclusion: | The product has been tested and complies with the given specifications. |

Caution: Product has not been fully validated for medical applications. For research use only.

Tel: 609-228-6898

Fax: 609-228-5909

E-mail: tech@MedChemExpress.com

Address: 1 Deer Park Dr, Suite Q, Monmouth Junction, NJ 08852, USA