

## A-1331852

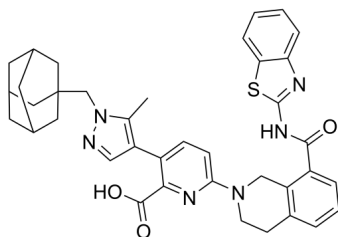
---

Cat. No.: HY-19741  
Batch No.: 211998  
CAS No.: 1430844-80-6  
Molecular Formula: C<sub>38</sub>H<sub>38</sub>N<sub>6</sub>O<sub>3</sub>S

### ANALYTICAL DATA

Theoretical: C(68.34%), H(5.89%), N(12.58%)  
Result: C(68.725%), H(5.99%), N(12.545%)

Chemical Structure:



**Caution: Product has not been fully validated for medical applications. For research use only.**

Tel: 609-228-6898

Fax: 609-228-5909

E-mail: [tech@MedChemExpress.com](mailto:tech@MedChemExpress.com)

Address: 1 Deer Park Dr, Suite Q, Monmouth Junction, NJ 08852, USA