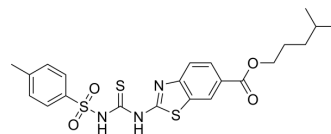


## BChE-IN-28

Cat. No.:	HY-157982
Molecular Formula:	C <sub>22</sub> H <sub>25</sub> N <sub>3</sub> O <sub>4</sub> S <sub>3</sub>
Molecular Weight:	491.65
Target:	Cholinesterase (ChE)
Pathway:	Neuronal Signaling
Storage:	Please store the product under the recommended conditions in the Certificate of Analysis.



### BIOLOGICAL ACTIVITY

Description	BChE-IN-28 (compound 6J) is a selective butyrylcholinesterase (BChE) inhibitor with an IC <sub>50</sub> of 8 nM and a K <sub>i</sub> of 12.16 nM. BChE-IN-28 shows the lower inhibition against AChE, MAO-A and MAO-B <sup>[1]</sup> .		
IC <sub>50</sub> & Target	BChE 8 nM (IC <sub>50</sub> )	BChE 12.16 nM (K <sub>i</sub> )	AChE 3691 nM (IC <sub>50</sub> )

### REFERENCES

[1]. Nguyen Dinh Thanh, et al. Sulfonyl thioureas with a benzo[d]thiazole ring as dual acetylcholinesterase/butyrylcholinesterase and human monoamine oxidase A and B inhibitors: An in vitro and in silico study. Arch Pharm (Weinheim). 2024 Feb 6:e2300557.

**Caution: Product has not been fully validated for medical applications. For research use only.**

Tel: 609-228-6898

Fax: 609-228-5909

E-mail: tech@MedChemExpress.com

Address: 1 Deer Park Dr, Suite Q, Monmouth Junction, NJ 08852, USA