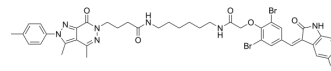


## PDE $\delta$ autophagic degrader 1

Cat. No.:	HY-157458
Molecular Formula:	C <sub>41</sub> H <sub>42</sub> Br <sub>2</sub> IN <sub>7</sub> O <sub>5</sub>
Molecular Weight:	999.53
Target:	ATTECs; Autophagy; Phosphodiesterase (PDE)
Pathway:	Autophagy; PROTAC; Metabolic Enzyme/Protease
Storage:	Please store the product under the recommended conditions in the Certificate of Analysis.



### BIOLOGICAL ACTIVITY

Description	PDE $\delta$ autophagic degrader 1 (compound 12c) is a potent PDE $\delta$ autophagic degrader. PDE $\delta$ autophagic degrader 1 reduces the PDE $\delta$ protein level through lysosome-mediated autophagy without affecting the PDE $\delta$ mRNA expression. PDE $\delta$ autophagic degrader 1 suppresses the growth in KRAS mutant pancreatic cancer cells <sup>[1]</sup> .
IC <sub>50</sub> & Target	Kd: 56 nM (PDE $\delta$ ) <sup>[1]</sup>

### REFERENCES

[1]. Jingying Bao, et al. Discovery of Novel PDE $\delta$  Autophagic Degraders: A Case Study of Autophagy-Tethering Compound (ATTEC). ACS Med Chem Lett. 2023 Dec 29;15(1):29-35.

**Caution: Product has not been fully validated for medical applications. For research use only.**

Tel: 609-228-6898

Fax: 609-228-5909

E-mail: tech@MedChemExpress.com

Address: 1 Deer Park Dr, Suite Q, Monmouth Junction, NJ 08852, USA