

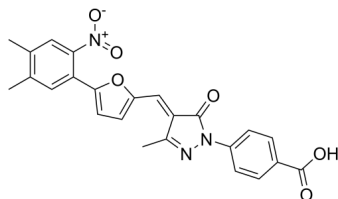
C646

Cat. No.: HY-13823
Batch No.: 15270
CAS No.: 328968-36-1
Molecular Formula: C₂₄H₁₉N₃O₆

ANALYTICAL DATA

Theoretical: C(63.43%), H(4.44%), N(9.25%)
Result: C(63.39%), H(4.575%), N(9.195%)

Chemical Structure:



Caution: Product has not been fully validated for medical applications. For research use only.

Tel: 609-228-6898

Fax: 609-228-5909

E-mail: tech@MedChemExpress.com

Address: 1 Deer Park Dr, Suite Q, Monmouth Junction, NJ 08852, USA