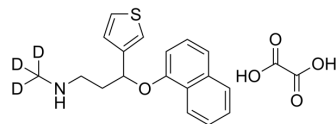


## rac-Duloxetine-d<sub>3</sub> oxalate

Cat. No.:	HY-132475S
CAS No.:	1346599-22-1
Molecular Formula:	C <sub>20</sub> H <sub>18</sub> D <sub>3</sub> NO <sub>5</sub> S
Molecular Weight:	390.47
Target:	Isotope-Labeled Compounds
Pathway:	Others
Storage:	Please store the product under the recommended conditions in the Certificate of Analysis.



### BIOLOGICAL ACTIVITY

#### Description

rac Duloxetine 3-Thiophene Isomer-d3 Oxalate is a stable isotope of Duloxetine.

**Caution: Product has not been fully validated for medical applications. For research use only.**

Tel: 609-228-6898

Fax: 609-228-5909

E-mail: [tech@MedChemExpress.com](mailto:tech@MedChemExpress.com)

Address: 1 Deer Park Dr, Suite Q, Monmouth Junction, NJ 08852, USA