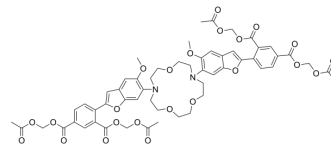


## SBFI-AM

Cat. No.:	HY-126831
CAS No.:	129423-53-6
Molecular Formula:	C <sub>56</sub> H <sub>58</sub> N <sub>2</sub> O <sub>23</sub>
Molecular Weight:	1127.06
Target:	Fluorescent Dye
Pathway:	Others
Storage:	Please store the product under the recommended conditions in the Certificate of Analysis.



### BIOLOGICAL ACTIVITY

Description	SBFI-AM is a Na <sup>+</sup> selective fluorescent indicator. SBFI-AM shows selectivity for Na <sup>+</sup> over K <sup>+</sup> [1].
-------------	--

### CUSTOMER VALIDATION

- Adv Mater. 2023 Sep 5;e2306469.

See more customer validations on [www.MedChemExpress.com](http://www.MedChemExpress.com)

### REFERENCES

[1]. Minta A, et, al. Fluorescent indicators for cytosolic sodium. J Biol Chem. 1989 Nov 15;264(32):19449-57.

**Caution: Product has not been fully validated for medical applications. For research use only.**

Tel: 609-228-6898

Fax: 609-228-5909

E-mail: [tech@MedChemExpress.com](mailto:tech@MedChemExpress.com)

Address: 1 Deer Park Dr, Suite Q, Monmouth Junction, NJ 08852, USA