

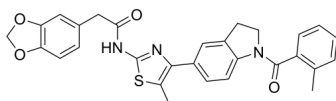
ML385

Cat. No.: HY-100523
Batch No.: 158245
CAS No.: 846557-71-9
Molecular Formula: C₂₉H₂₅N₃O₄S

ANALYTICAL DATA

Theoretical: C(68.08%)、H(4.93%)、N(8.21%)
Result: C(67.80%)、H(4.85%)、N(8.17%)

Chemical Structure:



Caution: Product has not been fully validated for medical applications. For research use only.

Tel: 609-228-6898

Fax: 609-228-5909

E-mail: tech@MedChemExpress.com

Address: 1 Deer Park Dr, Suite Q, Monmouth Junction, NJ 08852, USA